

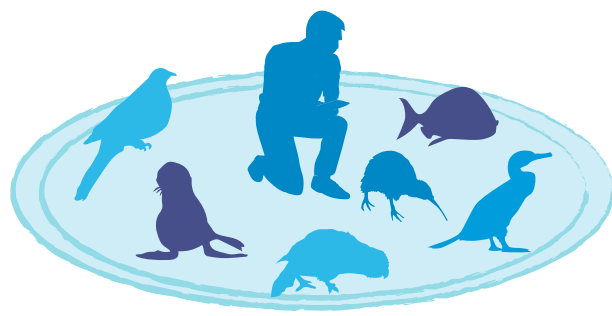
Tīwaiwaka

Whenua 1st

Our Principles



The whenua, Papatūānuku, is the source of all life. She is the Mother. Ka ora te whenua, ka ora te tangata



We are not the centre of the Universe but we are part of it. All living creatures are our brothers and sisters. We must care for them



The Mauri is the web of connections that sustains life. It has greater priority than the rights and needs of any individual or species



Our role is to care for the Mauri. In doing so we are cared for by it



No individual person is more important than any other. Each must contribute what we have to offer, and are entitled to receive what we need to be well



We give special care to the tiniest living creatures and organisms. They are the foundation that keeps and sustains all life

Advocate for Papatūānuku



Effective environmental advocacy requires us to feel Papatūānuku's message in our bones in order to assume her voice



Grow our rongoā gardens in 3's (1 for the whanau, 1 for manuhiri, 1 for the tūrehu in order to give back)



Engage in regular and respectful discussion, seeking input from a diverse range of people and volunteers and pool our skills and experience



Vote for those who understand the need for positive change

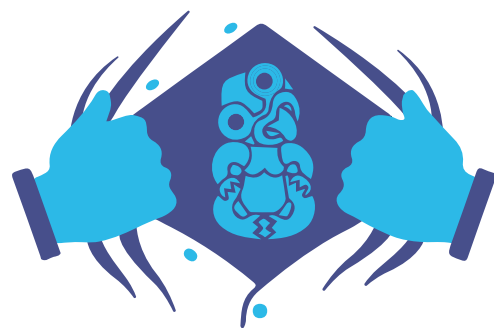


Speak up: talk with people, contact the media; pester companies about their product stewardship; write an article, a letter, a facebook post

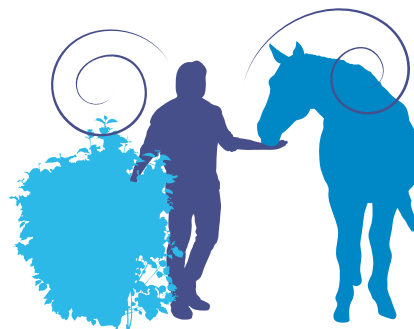
Act Now – lead by doing not just talking



Share with people how to listen, learn and observe for themselves rather than just what to remember



Do the things we can individually to make a difference - every little bit counts



Foster relationships with the non-human world and grow both our affinity to place and our understanding of what's required



Do what moves you (plant trees, campaign for better public transport, care for creatures, become a citizen scientist, sort e-waste, help build resilient communities) – everything's connected



Connect with others doing similar things to grow momentum, share the load; join a community group, participate in a workshop, exchange homegrown produce; start a local campaign



Examine our own cultural biases about how we understand the world



Take personal responsibility to do what we know to be the right thing



We are nothing in this world but for everything else. We must play our part to grow the mauri. Mauri is found in the connections that enable life to thrive. The mauri surging through our veins will pass to another and another and the world will come alive again

